

CENTENNIAL CAMPAIGN

A PRESENT AND FUTURE COMMUNITY OF FAITH

The Benedictine Order of Cleveland (*Saint Andrew Abbey and Benedictine High School*)



Proposed new BHS main entrance from north parking lot





Current "Men of Benedictine" 2020

A COMMUNITY OF FAITH

For almost 100 years, the Benedictine Order of Cleveland has carried out the centuries-old tradition rooted in the Rule of St. Benedict and its emphasis on achieving peace through a balanced life of prayer and work. The Cleveland Benedictines carry out their tradition through their commitment to community life, liturgical celebrations, hospitality, Catholic secondary education, support of Slovak culture, and parish ministry.

As the Benedictine Order of Cleveland approaches its 100th anniversary of living out its mission, they reflect on their past, embrace the challenges of the present, and plan for the future.

Those who have been influenced by the monks as their spiritual directors, teachers, pastors, and friends have also carried the Benedictine spirit of "Prayer and Work" into countless homes, communities, and work places near and far.

Benedictine students and graduates go out into the world as Men of Benedictine, reflecting our collective commitment to the good of our local and global community. The monks have been and remain dedicated to Cleveland and the community it serves.



The monks meet with their confreres at Regina Health Center.

VISION FOR THE FUTURE

The Benedictine Order of Cleveland was established in 1922 and moved to the Buckeye neighborhood in 1929 and planted its roots on the campus that has been familiar to the Benedictine family until the present day. A number of additions and improvements have been made to the campus since 1929, especially the current BHS classroom building (1940), the residential wings of Saint Andrew Abbey (1952), the Trueman Memorial Fieldhouse (1961), the abbey church and guest wing and renovation of BHS science labs (1984), remodeling of all the BHS classrooms (2001), and the construction of the Bossu Athletic Field (2009).

Under the leadership of Abbot Gary Hoover, OSB '74 and the Board of Trustees, the Benedictine Order of Cleveland developed the *Benedictine Centennial Campaign: A Present and Future Community of Faith*, a five-year strategic campaign to build upon the century of work and prayer of the Benedictine monks in giving glory to God and forming the “Men of Benedictine” in the 21st century.

The Centennial Campaign outlines six key areas of focus to enhance the experience of the students and the monks:

- **Unifying the abbey and high school with a campus-like courtyard;**
- **Constructing a new entrance for BHS, upgrading the science labs, and replacing the abbey church roof;**
- **Acquiring adjacent residential properties;**
- **Providing continued healthcare and education for the monks of Saint Andrew Abbey; and**
- **Renovating/upgrading the academic facilities to include the cafeteria and classrooms.**



Artist's rendering of the new main entrance connecting the science wing with the main academic wing.

BENEDICTINE HIGH SCHOOL

CAMPUS

New Main Entrance to Benedictine High School

A new entrance to the academic facility will enhance the welcoming and gathering areas in the main building. The new entrance will connect the academic and athletic facilities and will be the new home to independent study areas, conference rooms, and common gathering space.

Expand the Campus by Acquiring Adjacent Properties

Acquiring the adjacent residential properties on Martin Luther King Jr. Drive, as well as East 104th Street is a necessary step to securing the Benedictine Order of Cleveland's strong presence in the Buckeye

neighborhood. It will provide freedom and flexibility to expand in a proactive manner to accommodate the growth of the high school and abbey.

The Rufus Courtyard

This greening and physical unification of the campus will create a welcoming, college-like campus atmosphere with the addition of a quad. The new green space, which will extend the natural beauty of the 1954 Marian Grotto, will provide an opportunity for greater appreciation and experience of the Benedictine concept of stewardship of nature as God's gift while encouraging students, alumni, families, monks, and visitors to interact in a natural setting outside the building walls.

ACADEMIC FACILITIES

Updating the Science Labs and Classrooms

Our science laboratories are in need of updating to provide our students access to modern trends in science and technology. The entire space will be renovated and upgraded to meet the 21st century standards for science curriculum by incorporating technology and data analysis into the classrooms.

Modernizing the existing science laboratories will advance the curriculum, enhance the experience of students, and better prepare students to pursue S.T.E.M. (Science Technology Engineering Math) interests in college and beyond.

Academic Facility Renovations and Upgrades

In order to support the recruitment and education of up to 400 young men, we seek to enhance our academic facility to provide a facility conducive to academic excellence that will provide opportunities for students to succeed in and out of the classroom.

Cafeteria

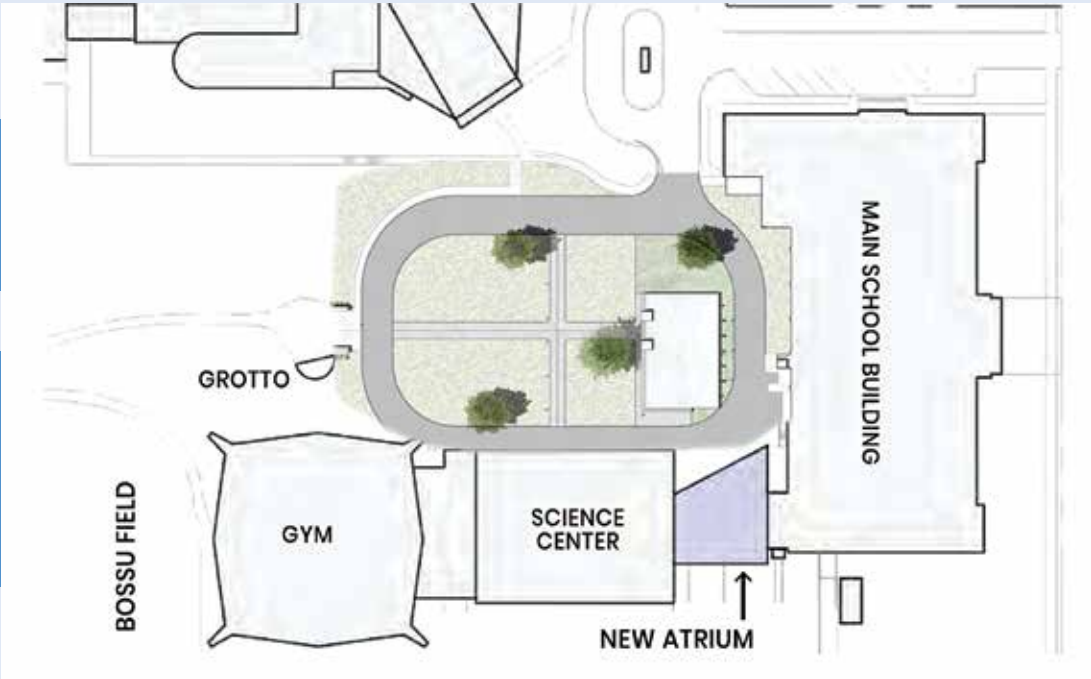
The largest gathering area in the high school building is the cafeteria. In addition to daily lunch service, this space holds school, abbey, and community meetings and events. Service station, floor, and furniture upgrades will enhance the comfort levels of the gathering and dining experiences.



PHASE ONE AND TWO: AT A GLANCE

PHASE ONE: BEAUTIFYING THE CAMPUS – THE COURTYARD AND COMMONS

PHASE TWO: BUILDING THE NEW ATRIUM ENTRANCE AND REPLACING THE ROOF OF THE ABBEY CHURCH AND OTHER CAPITAL IMPROVEMENTS



THE NEW ATRIUM



Current Exterior - North (Looking South)



Exterior View - North Entrance



Current Exterior - South (Looking North)



Exterior View - South Entrance



SAINT ANDREW ABBEY

Repair Saint Andrew Abbey Church

Saint Andrew Abbey Church with its iconic arched banner belfry is the highest structure on the Benedictine campus. It was built in 1984 and originally had sky lights in the massive sloping roof. These sky lights caused leaks in the roof that have been continually repaired for the last 35 years. The second phase of the capital campaign will replace the roof and update the sound and lighting of the church.

Both the monastic community and the school community worship in this sacred building following the precept given in the Rule of St. Benedict, "Let nothing be preferred to the Word of God."

Enhance continuing education, healthcare, and retirement endowments for the monks of Saint Andrew Abbey

Celebrating the centennial of the arrival of the first Benedictine monks in Cleveland in 1922 also means celebrating and honoring the 27 monks of Saint Andrew Abbey who continue to "pray and work" each day. This is especially true of the older monks who have retired from many years of teaching or other good works and now need supportive medical care.

It is also important to celebrate and honor the younger monks who are vital for the future of the abbey and the high school. The third phase of the capital campaign will strengthen endowments dedicated to the continuing education, healthcare, and medical needs of monks of all ages.

AN EXTRAORDINARY OPPORTUNITY

The Benedictine monastic and scholastic communities are grateful for the annual generous support provided by benefactors through The Abbey Benefit, The BHS Blue and White Gala, the BHS annual scholarship appeal and other fundraisers. However, the **Centennial Campaign: a Present and Future Community of Faith** offers a unique and historical opportunity to position the abbey and high school for future growth through a \$4 million investment by those who believe and have benefited from ten decades of prayer and work of the Benedictine Order of Cleveland.

TRANSFORMING THE CAMPUS



PHASE ONE:

Beautifying the campus –
the courtyard and commons

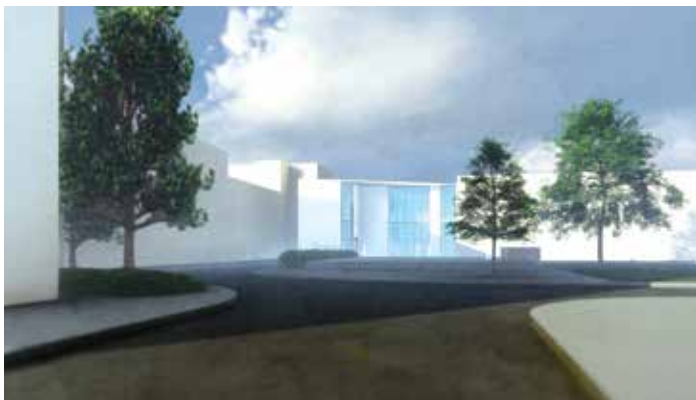
PHASE TWO:

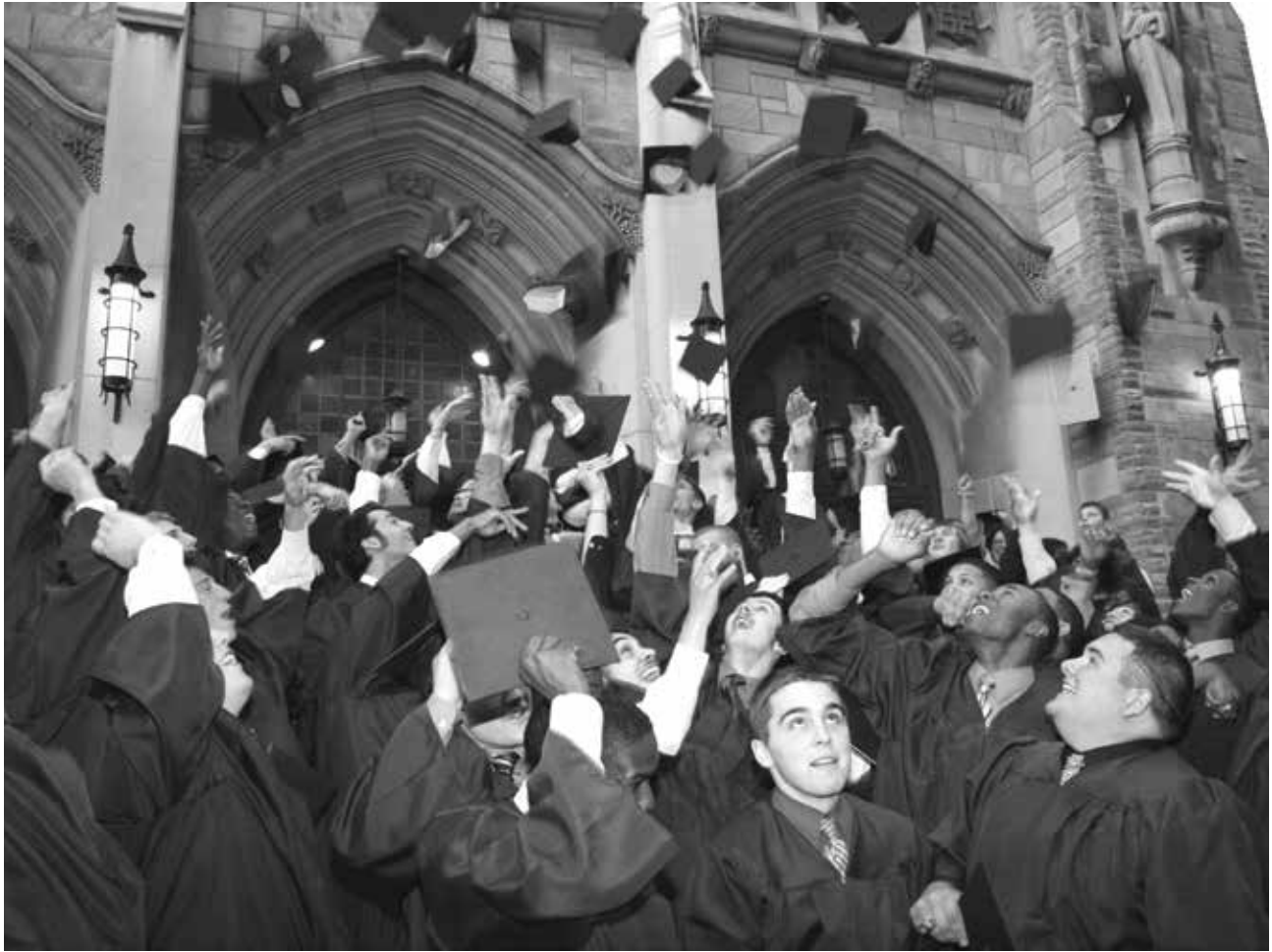
Connecting the main classroom
building with the science wing

Replacing the roof of the
abbey and other capital
improvements to the abbey

PHASE THREE:

Modernizing the school's science labs
Remodeling the cafeteria
Classroom and auditorium renovations





Before we set out on our path for the future, we must take a moment to commemorate the decades of leadership, philanthropic partnerships, and tradition you have helped us uphold. As a visionary donor, partner and leader, you not only validate our mission, but embody the Hallmarks and traditions of the Benedictine Order of Cleveland.

THANK YOU.



The Benedictine Order of Cleveland
2900 Martin Luther King Jr. Drive
Cleveland, OH 44104
216-421-2080
www.cbhs.net